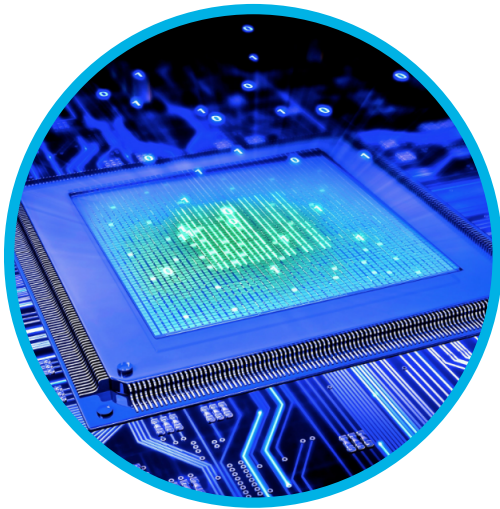


AC7000

FACE & FINGERPRINT
ACCESS CONTROL TERMINAL

**FACE AUTHENTICATION IS TOO SLOWER
NEED TO BEND YOUR BACK AND KNEES
FAKE FACE & FAKE FINGER ARE TOO WEAKER**





CPU



TOUCH LCD



ANDROID OS

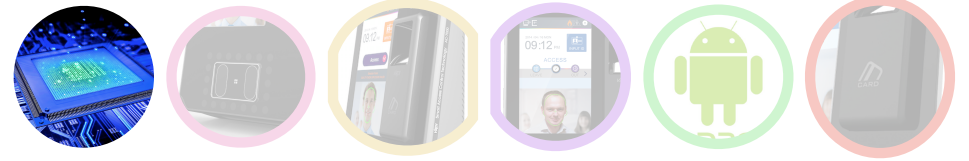


FINGERPRINT



CARD

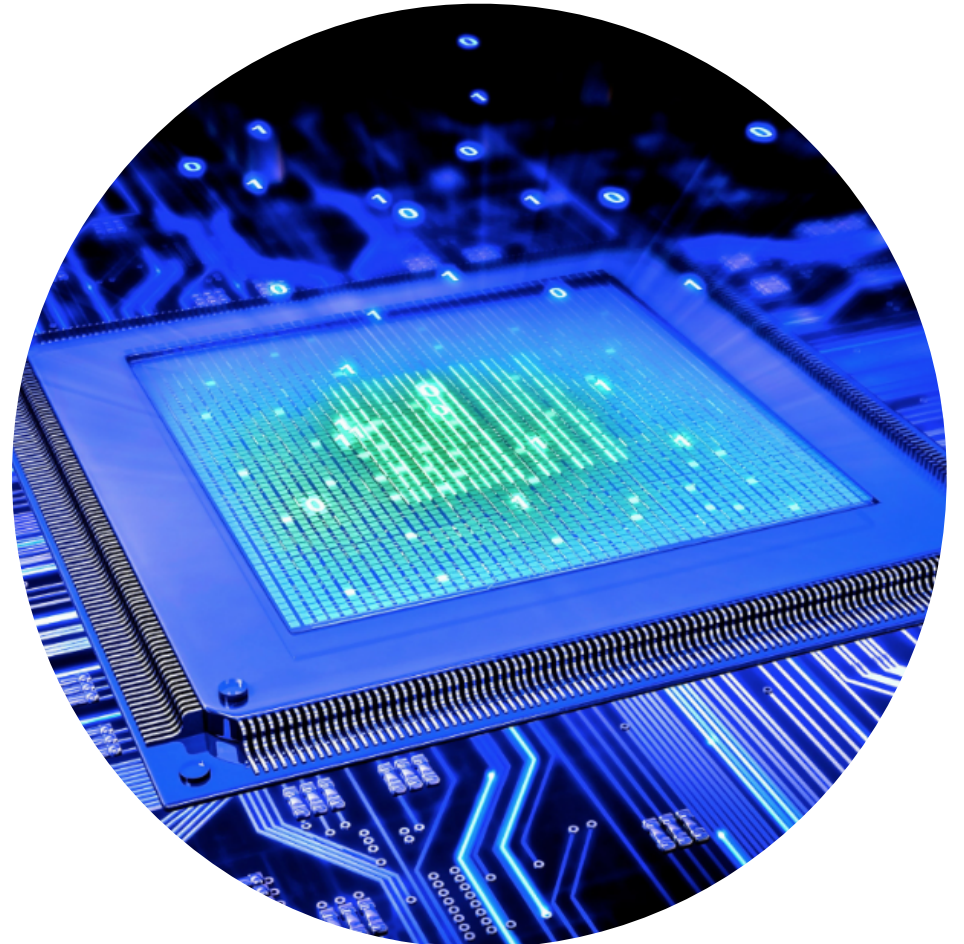
CPU



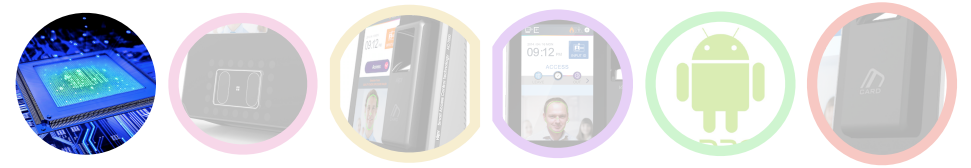
Powerful CPU

With embedded world guaranteed algorithm and the highest spec, AC7000 provides unbelievable number of capacity and the ultra fastest authentication speed to be secure and reliable access control and time attendance

10,000 FACE
2,000 I TO N
250,000 FINGER
25,000 I TO N
10,000,000 LOG



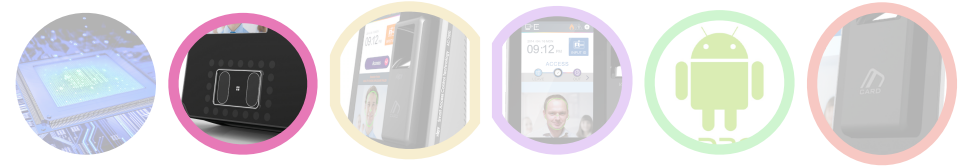
DUAL CPU



Fastest Dual Authentication Speed less than 1Sec

More Secure Authentication and Convenient. There are various 26 Authentication Combination per user's needs. With these features, AC7000 now is more powerful and Incomparable security device.

IR Sensor & LED



Color Sensor



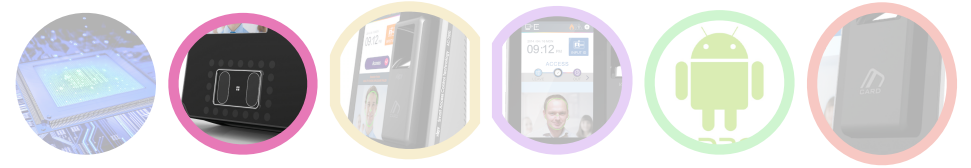
IR Sensor



IR makes High Quality Face Image Quality

Dual Camera (Color & IR) If Illumination is low, it is saved an image log as IR image for Identification and easy access under any light conditions with IR Pass Filter.

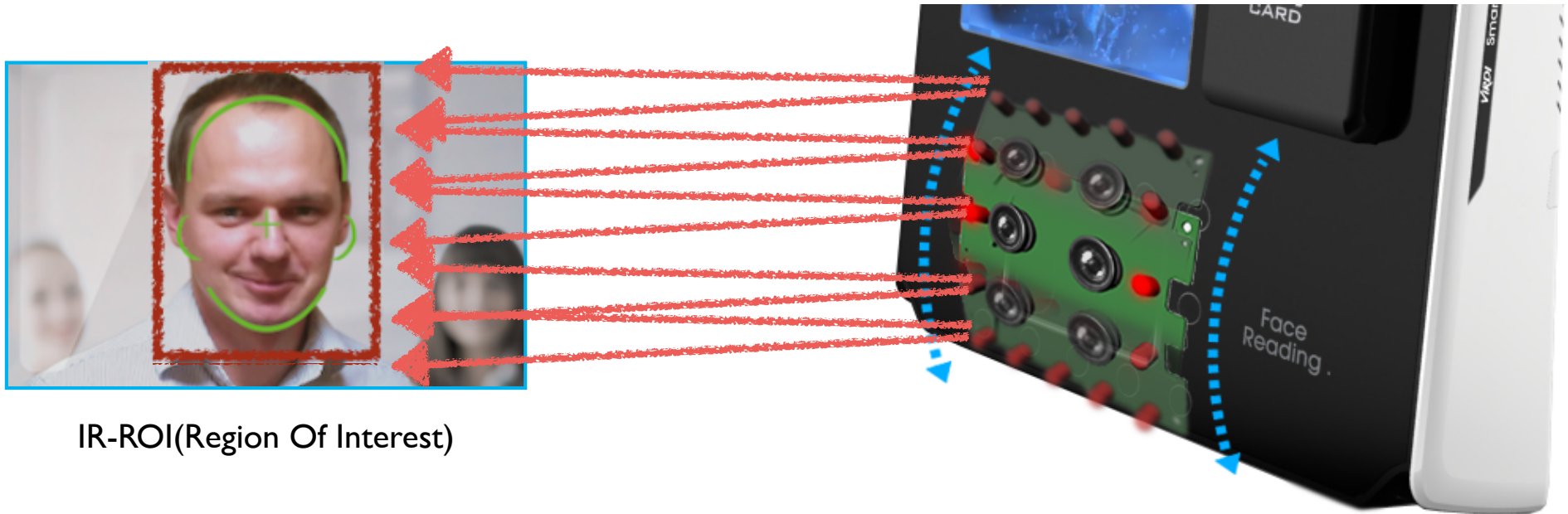
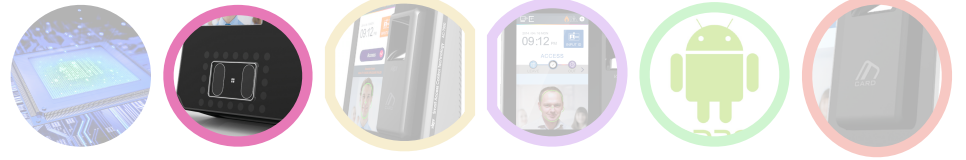
Titled Dual Camera



An Easier Way to Place Face by Titled Dual Camera

Convenient Face Authentication. On AC7000, you can just stop and access less than 1 sec. This is as easy as standing in front of AC7000 and placing Face without bending your back and knees

Fake Face Detection

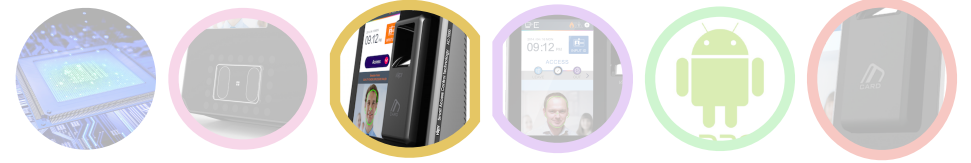


IR-ROI(Region Of Interest)

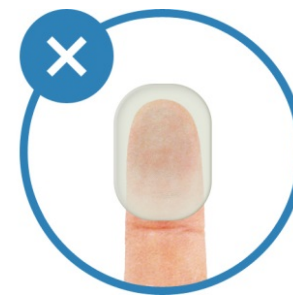
Fake Face Detection Technology

By applying an advanced fake face detection technology, AC7000 promises both security and convenience.

FAS04 FP SENSOR

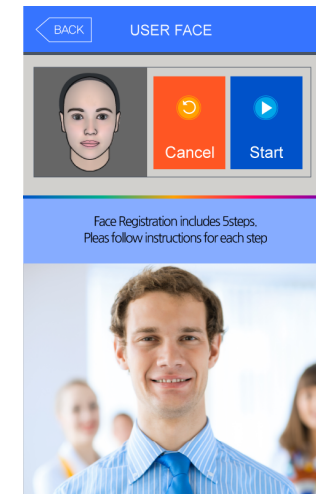
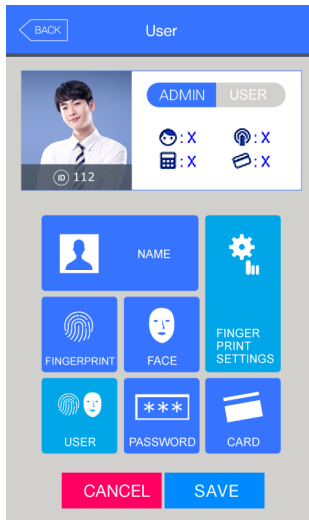
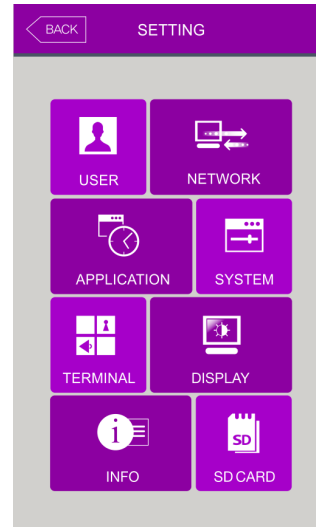
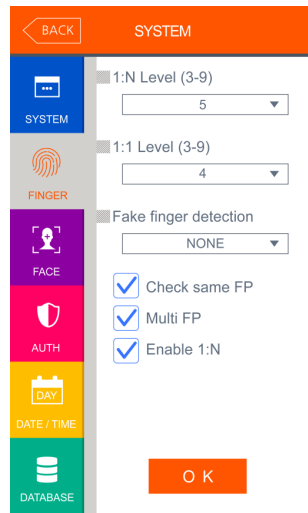
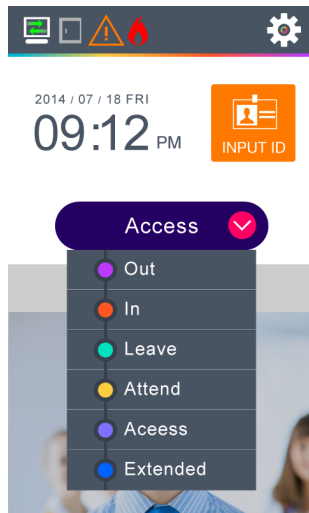
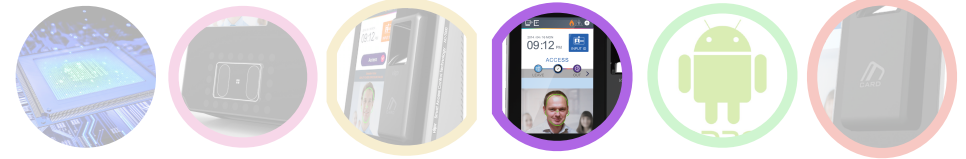


PATENTED FAKE FINGER DETECTION
FVC NO.1 ALGORITHM
0.8 INCH WIDE SENSOR WINDOW
FBI PIV CERTIFICATE
MINEX

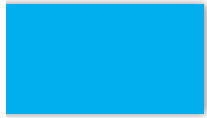


Protects from various types of fake fingers

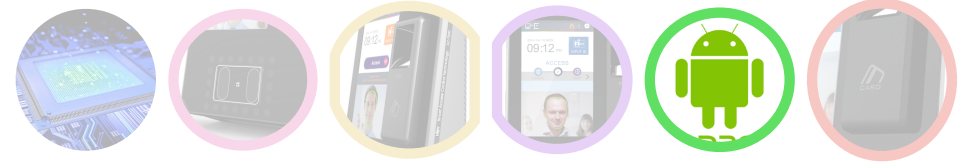
5 INCH TOUCH LCD



Electrostatic capacity LCD enhanced touch sensitivity and improved user convenience with user friendly UI

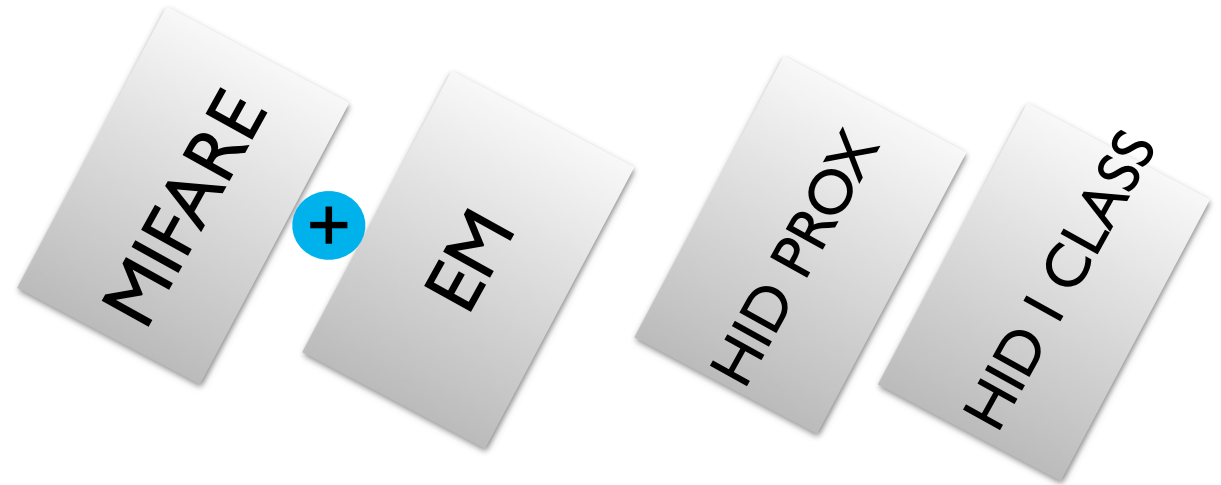
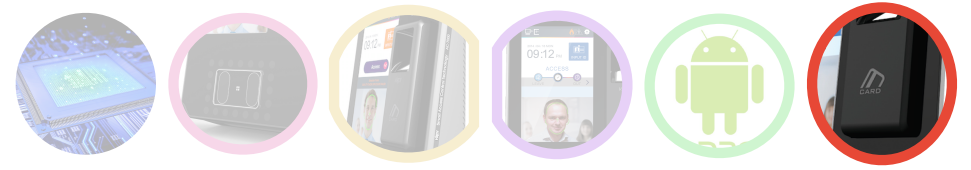


ANDROID OS



Easy to develop a various application

DUAL CARD



MIFARE 13.56MHZ + EM 125KHZ
HID PROX, HID I CLASS (OPTIONAL)

SPECIFICATION



ITEM	SPECIFICATION
CPU	1GHz Quad Core
Flash / RAM	Flash 4G + MicroSD 8G Bytes / 1Gbytes
LCD	5 inch Touchpad (480x800)
Camera	Titled Dual Camera (Color & IR)
User Capacity	250,000 User / 250,000 Finger (1 to N 25,000) / 10,000 Face (1 to N 2,000), 10,000,000 Log / 20,000 Image log
Voice / Beep	Sounds Volume Control, Supports Multi Language
FP Module	FAS04 (20x20 mm / 400x400 pixel /500dpi)
Card Option	125Khz EM / 13.56Mhz / HID Prox (Optional), HID iClass(Optional)
SD Card	Data Backup / Firmware Upgrade
Communication Interface	TCP/IP(10/100M), RS485, RS23S, WIEGAND IN & OUT, WIRELESS USB (Optional)
Lock Control	EM, Strike, Motor, Auto Door
I/O	4 IN (1 EXIT, 3 MONITOR), 2 OUT
OS	ANDROID

REFERENCE

(1) Access Control



REFERENCE

(2) Time Management

